



# GAT MONTHLY MEMBERSHIP PROGRESS REPORT

Results as of: 2/28/2023

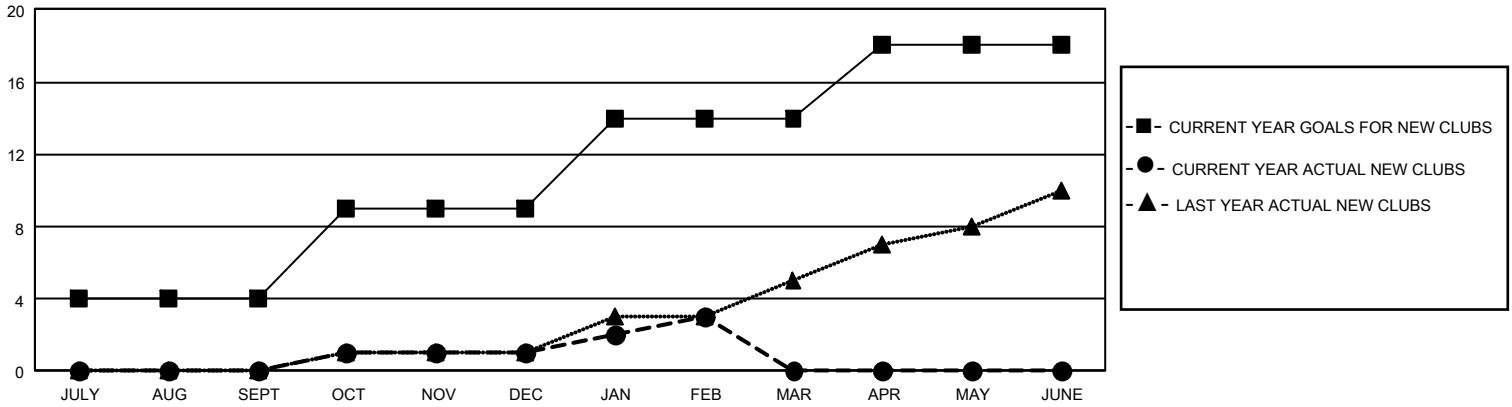
## GMT Constitutional Area 5 - J, Group H

REPORT DOES NOT INCLUDE CLUBS IN UNDISTRICTED AREAS.

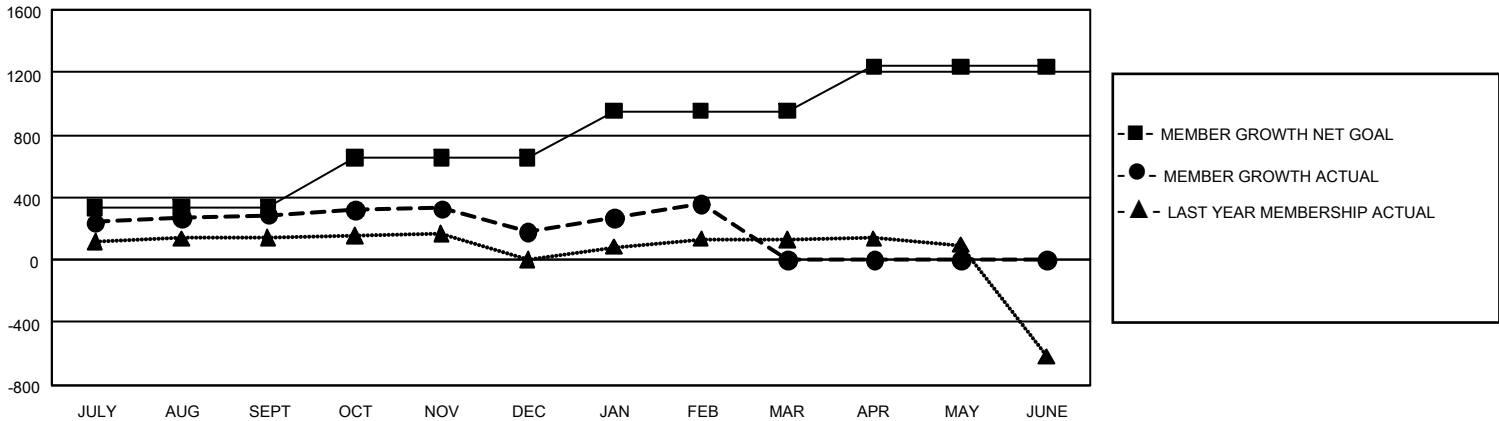
Clubs			
RESULTS FOR 2022-2023			
QUARTER	NEW CLUB GOAL	NEW CLUBS	DROPPED CLUBS
JULY/AUG/SEPT	12	0	1
OCT/NOV/DEC	15	1	0
JAN/FEB/MAR	15	2	0
APR/MAY/JUNE	12	0	0

Members			
RESULTS FOR 2022-2023			
QUARTER	MEMBER GROWTH NET GOAL	MEMBER GROWTH ACTUAL	DROPPED MEMBERS ACTUAL (including transfers)
JULY/AUG/SEPT	334	616	289
OCT/NOV/DEC	320	249	352
JAN/FEB/MAR	300	362	176
APR/MAY/JUNE	285	0	0

GOALS AND ACTUAL NEW CLUBS CUMULATIVE



GOALS AND ACTUAL MEMBERS CUMULATIVE



DROPPED CLUBS: 1	
<b>DROPPED MEMBERS</b>	
DECEASED	137
CLUB CANCELLED	0
OTHER	680
<b>TOTAL</b>	<b>817</b>

400 CLUBS OF 682 ADDED 1 OR MORE NEW MEMBERS

[CLICK HERE FOR CUMULATIVE MEMBERSHIP DATA](#)

GENDER DISTRIBUTION	
MALE	17,519 (74.66%)
FEMALE	5,945 (25.34%)
NON BINARY	0 (0.00%)
PREFER NOT TO ANSWER	0 (0.00%)
TOTAL FAMILY UNIT MEMBERS	8,921
FAMILY MEMBERS PAYING HALF DUES	4,949